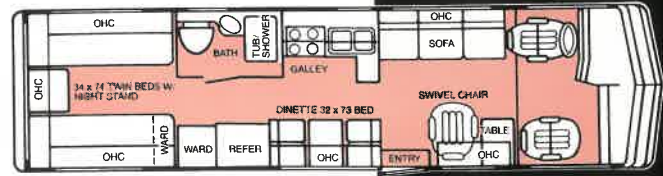
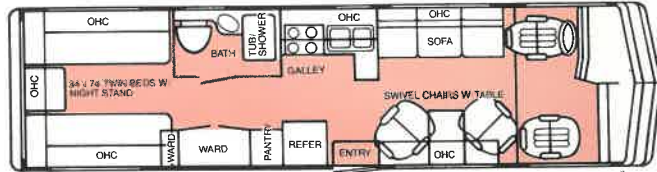


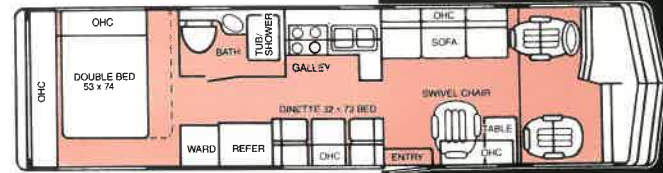
928



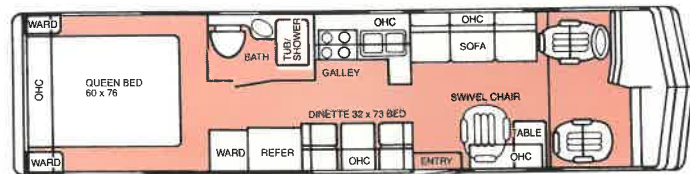
829



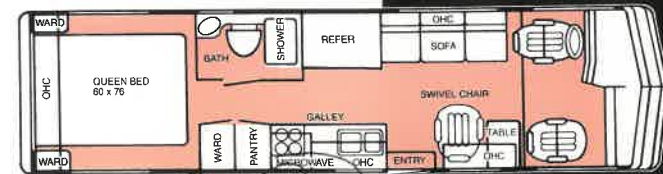
929



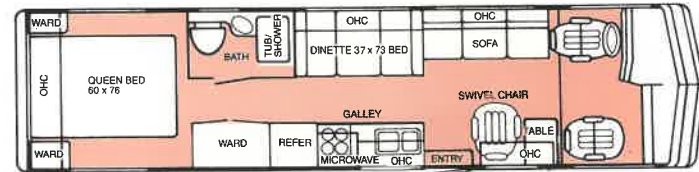
828



829-I TWIN BEDS AVAILABLE



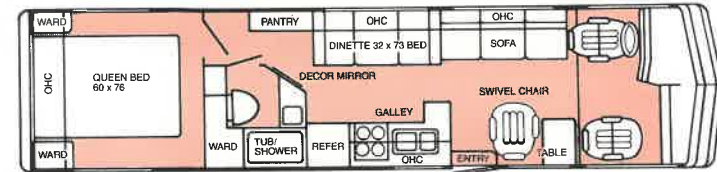
827



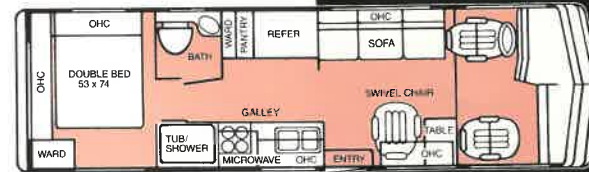
931 TWIN BEDS AVAILABLE



726



932 TWIN BEDS AVAILABLE



725

Standard Equipment – All Models

- In dash cassette holders
- Cruise control and tilt wheel
- Transmission and engine oil coolers
- Halogen headlights
- Dash air conditioner
- Radial tires
- Firestone Ride Rite air bags
- Spare tire on an electric winch
- Jack and lug wrench
- One piece fiberglass roof
- 40 gallon gasoline tank (optional 60)
- 10 cu. ft. flush mount Norcold 3-way fully auto refrigerator
- 4 burner stove with pilot & black glass door
- Vinyl floor in galley area
- Passenger pedestal (that raises up & down)
- Solid raised panel oak door
- Beveled edge mirrors
- Carpet in storage compartments
- Valances & real wood blinds
- Auto DSI water heater
- Roof rack and ladder
- 200 amp Die Hard extra large battery on slide out tray
- 30 m B.T.U. furnace
- Reclining and swivel cab seats
- Monitor panel
- Range hood with power vent & light
- Flushmount radius entry & driver door
- Extra large double sink
- High grade carpet with 1/2" padding
- Lighted storage compartment
- Power vent in bath
- Smoke detector and fire extinguisher
- Magazine and spice racks
- Automotive under sealing